

JAMES P. B. DUFFY
SCHOOL #12A

State of the School Address
April, 2015

Ultimate Vision

We at James P. B. Duffy promise to engage our minds, develop our bodies and capture our hearts in order to be academically ready, socially mature, and responsible citizens...

to be ready for the 21st century

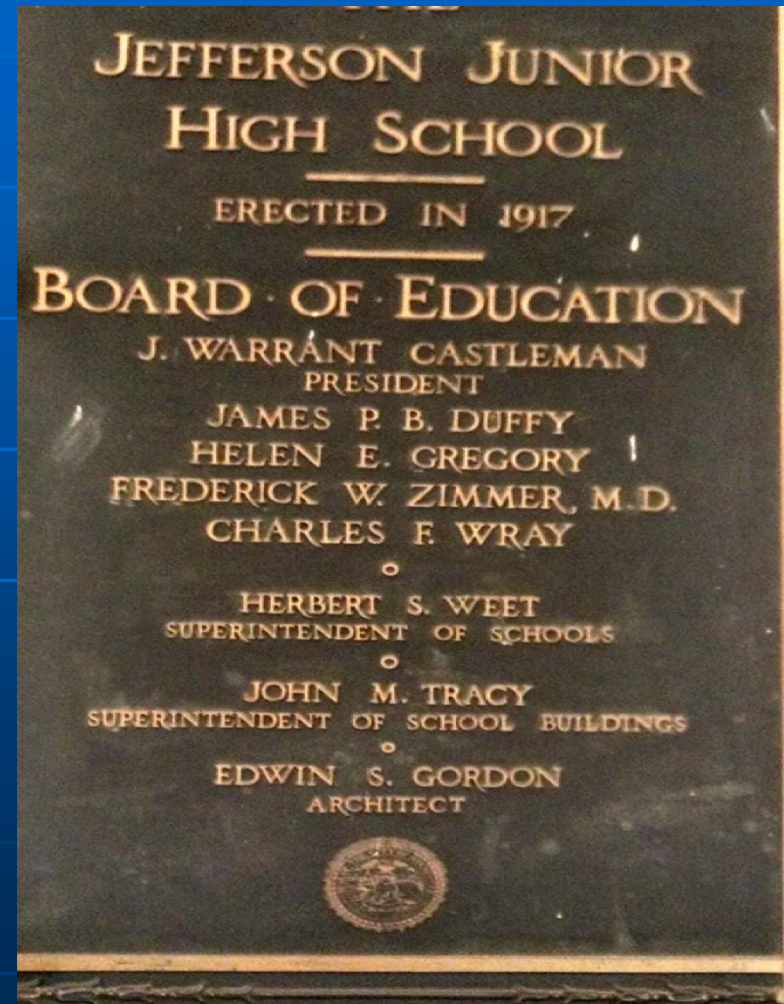
Everybody needs to work

together to make this happen

every day.

SCHOOL 12 CONNECTION TO THE JEFFERSON CAMPUS-

*James P.B. Duffy
was on the
school board in
1917 when
Jefferson High
School was
opened!*



Our new home- a smooth transition



- Painted
- Primed
- Primed
- *Classrooms were up and running on Day One*

Our New Neighborhood



JAMES P. B. DUFFY SCHOOL #12

DATA REVIEW



DEMOGRAPHICS

686 students
77.4% Poverty rate
94% Attendance
93% this year

Percentage of Students	2013-14
Asian/ Other/Hawaiian	22
African American	374
Hispanic or Latino	206
White	106
All Ethnicities	737

Type of Students	2014-15
General education	600
SWDs	86
ELLs	112
Bilingual	165
Total Enrollment	686

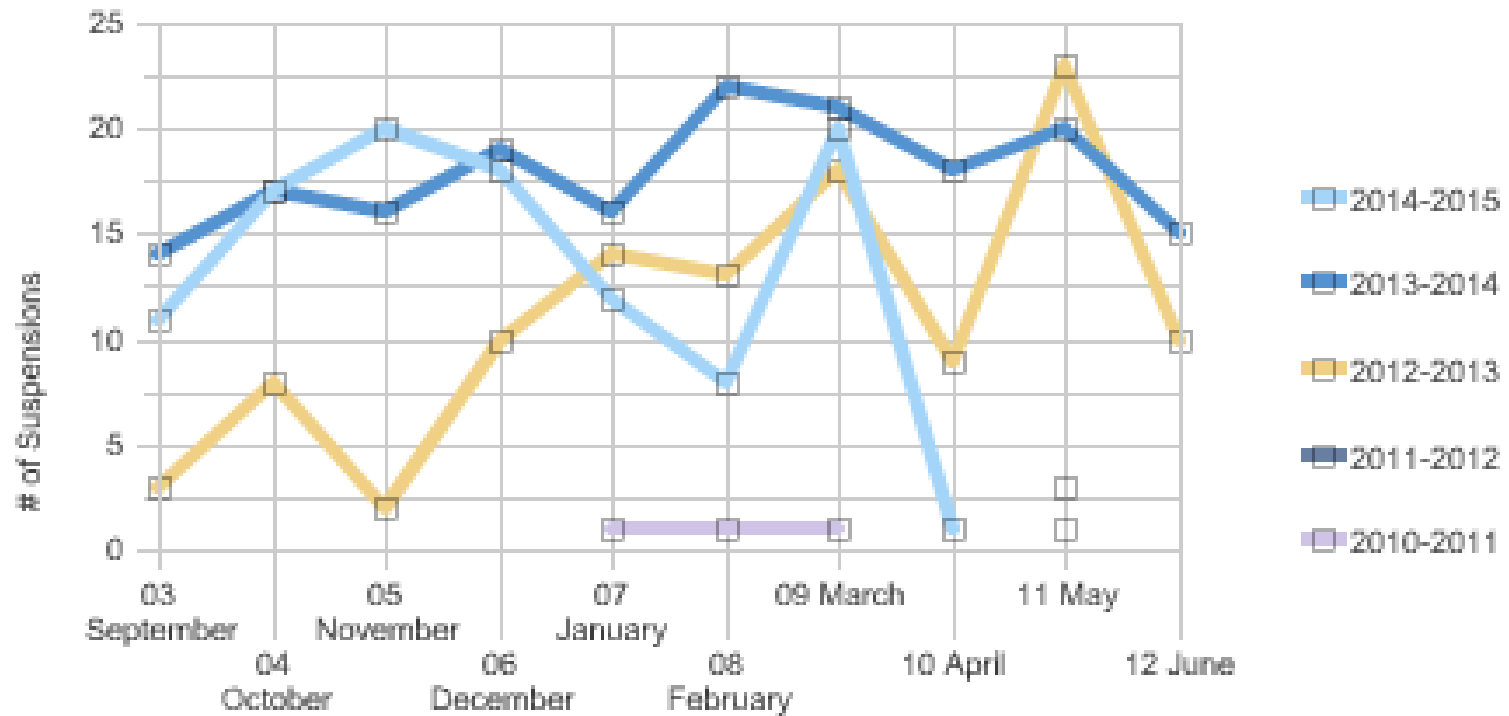
Suspensions and Discipline

Year	Total Incidents	ST	LT	ISS	OSS	Alt Prog.
2014-15	84	106	1	95	11	1
2013-14	167	177	1	175	3	0

- Continued focus on school wide positive interventions- PBS
- Added Character Trait Monthly Assemblies
- Focused on use of community resources

Year to Year Comparisons

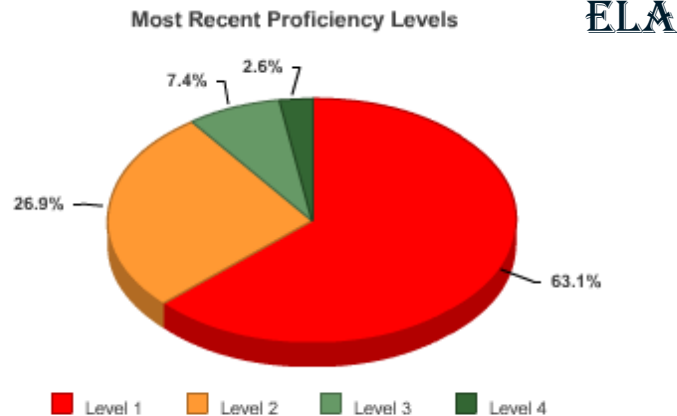
Suspensions by Month



NYS 2013-14 Test Data

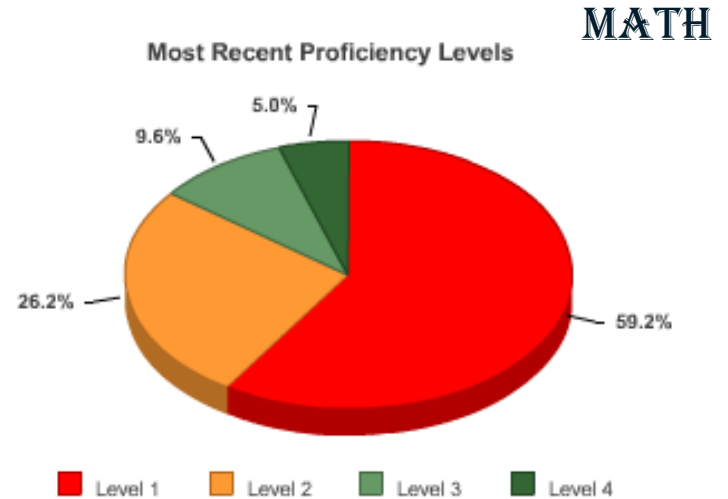
	2009-2010	2010-2011	2011-2012	2012-2013	2013-2014
Item Name	% 3-4	% 3-4	% 3-4	% 3-4	% 3-4
Grade 3 ELA	34.2%	38.1%	21.1%	11.7%	11.7%
Grade 4 ELA	36.4%	36.1%	31.0%	8.9%	12.5%
Grade 5 ELA	29.5%	36.0%	25.7%	7.1%	10.5%
Grade 6 ELA	37.1%	31.9%	30.6%	11.2%	5.3%
Total	34.4%	35.7%	27.2%	9.7%	10.0%

[Refresh](#) - [Print](#) - [Download](#)



	2009-2010	2010-2011	2011-2012	2012-2013	2013-2014
Item Name	% 3-4	% 3-4	% 3-4	% 3-4	% 3-4
Grade 3 Math	39.3%	22.2%	15.5%	6.3%	13.5%
Grade 4 Math	30.8%	26.2%	28.2%	10.4%	15.2%
Grade 5 Math	30.5%	37.4%	37.5%	13.0%	17.8%
Grade 6 Math	27.8%	40.7%	45.0%	13.1%	11.6%
Total	32.5%	31.0%	31.6%	10.8%	14.6%

[Refresh](#) - [Print](#) - [Download](#)



Where are we now?

- State Proficiency Scores

10% ELA

11% MATH



Coverts to State Growth Scores

11/20 growth score points

Statewide- Greater Than 9 points is

EFFECTIVE

ALL STAFF – HE or E

PROGRESS SUMMARY

- On-Going Progress Monitoring to differentiate instructional and assess student growth towards/beyond grade level expectations
 - Use of CCSS Modules mid and end of unit assessments, pause points, daily exit tickets
 - School wide data meetings with NWEA and AIMSWeb
- Secured additional technology programs to provide additional information for teachers and immediate feedback to children.
- Target setting with children to plot their own growth and learning goals.
- SBPT serves a school reflection team to address our School Comprehensive Improvement Plan

SCEP

District
Leadership and
Capacity

EFFECTIVE

School Leader
Practices and
Decisions

EFFECTIVE

Family and
Community
Engagement

School and
District
Review
Process

DEVELOPING

Curriculum
Development
and Support

EFFECTIVE

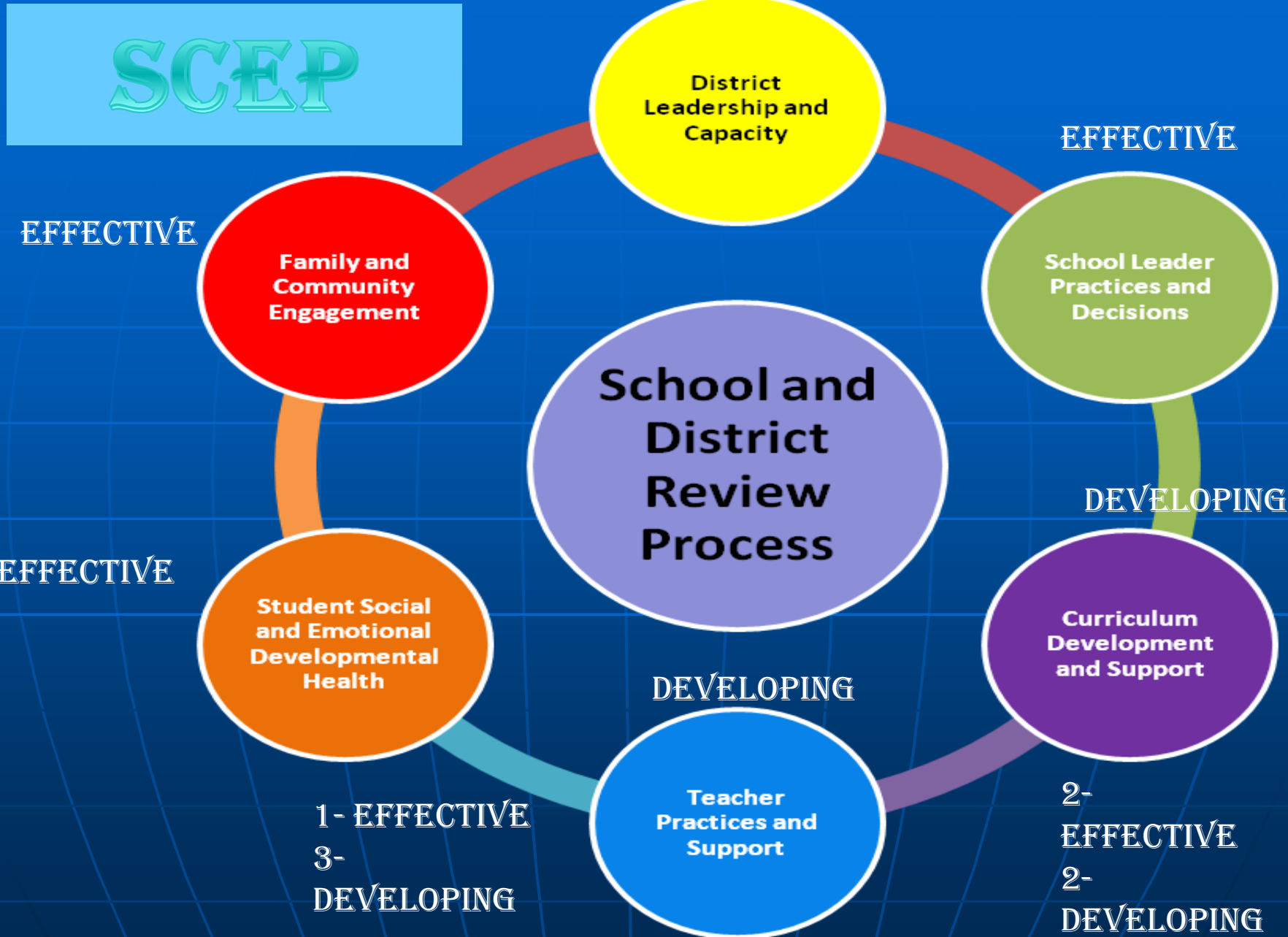
Student Social
and Emotional
Developmental
Health

DEVELOPING

Teacher
Practices and
Support

2-
EFFECTIVE
2-
DEVELOPING

1- EFFECTIVE
3-
DEVELOPING



SCEP

- This drives our instructional planning.
- Completed a comprehensive self assessment and identified next steps for continued improvement.
- Completed school-based DTSDE site visit review on April 9th. Recommendations will be used to finalize plan for 2015-16 school year.

Copies of SCEP and Self Assessment on school 12 website

<http://www.rcsdk12.org/12>

Summary of Recent Visit

- Solid classroom instruction-adherence to the higher standards
- High levels of student engagement
- Lesson planning evident across the school
- PD-Continue to focus on going deeper into differentiating learning and student ownership of lessons/questioning

From this...



To this...



To Our New Home to Come

